

# CREATE INTERDISCIPLINARY PROGRAM

## Program DesCartes started in 2021

Program DesCartes aims to develop disruptive hybrid AI to serve the smart city and enable optimized decision-making in complex situations for critical urban systems.

Hybrid AI will help us to support smart-city critical infrastructures: Smartly, Safely, Carefully, Responsibly

Descartes is a cross disciplinary program involving STEM and non-STEM research with artificial intelligence at its core and expertises in:

AI, Engineering, Humanities, Data Science, Formal methods, Human Computer Interaction, Natural Language Processing, Social Sciences, Signal & Image Processing

5

years duration for DesCartes program

80

Investigators half from France, half from Singapore

13

partner institutions from France

4

partner institutions from Singapore

50

SGD million budget for DesCartes program

200+

years of PhDs and Research Fellows

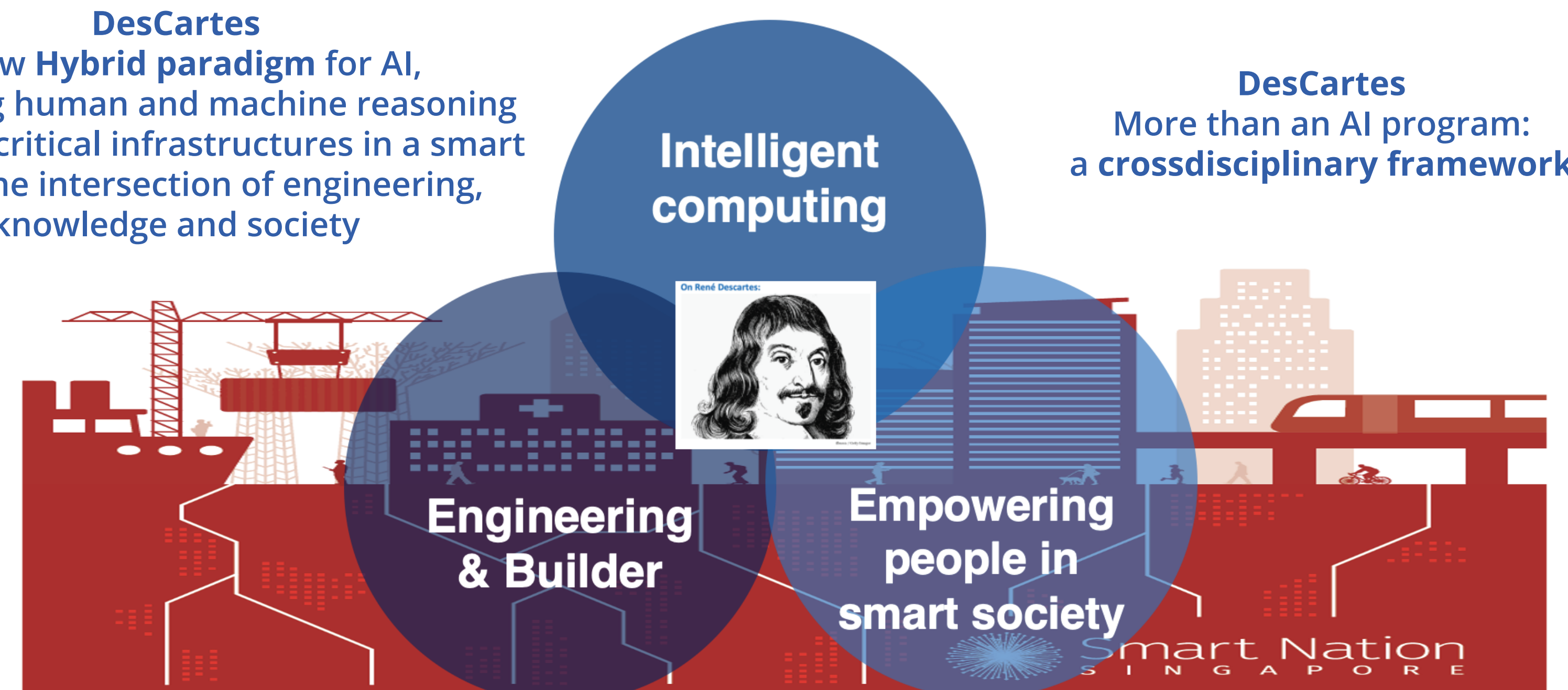
5

industrial partners

DesCartes a new Hybrid paradigm for AI, combining human and machine reasoning to control critical infrastructures in a smart city, at the intersection of engineering, knowledge and society

Intelligent computing

DesCartes More than an AI program: a crossdisciplinary framework



# INTRA CREATE THEMATIC GRANT CALLS

## CITIES

### EcoCTs

Engineering biology for a circular bioeconomy - Towards urban sustainability.

Started in october 2020 - 3 years.

Host institution CNRS@CREATE, in collaboration with INRAE, Toulouse 3, INSA Toulouse, NUS and A\*STAR.



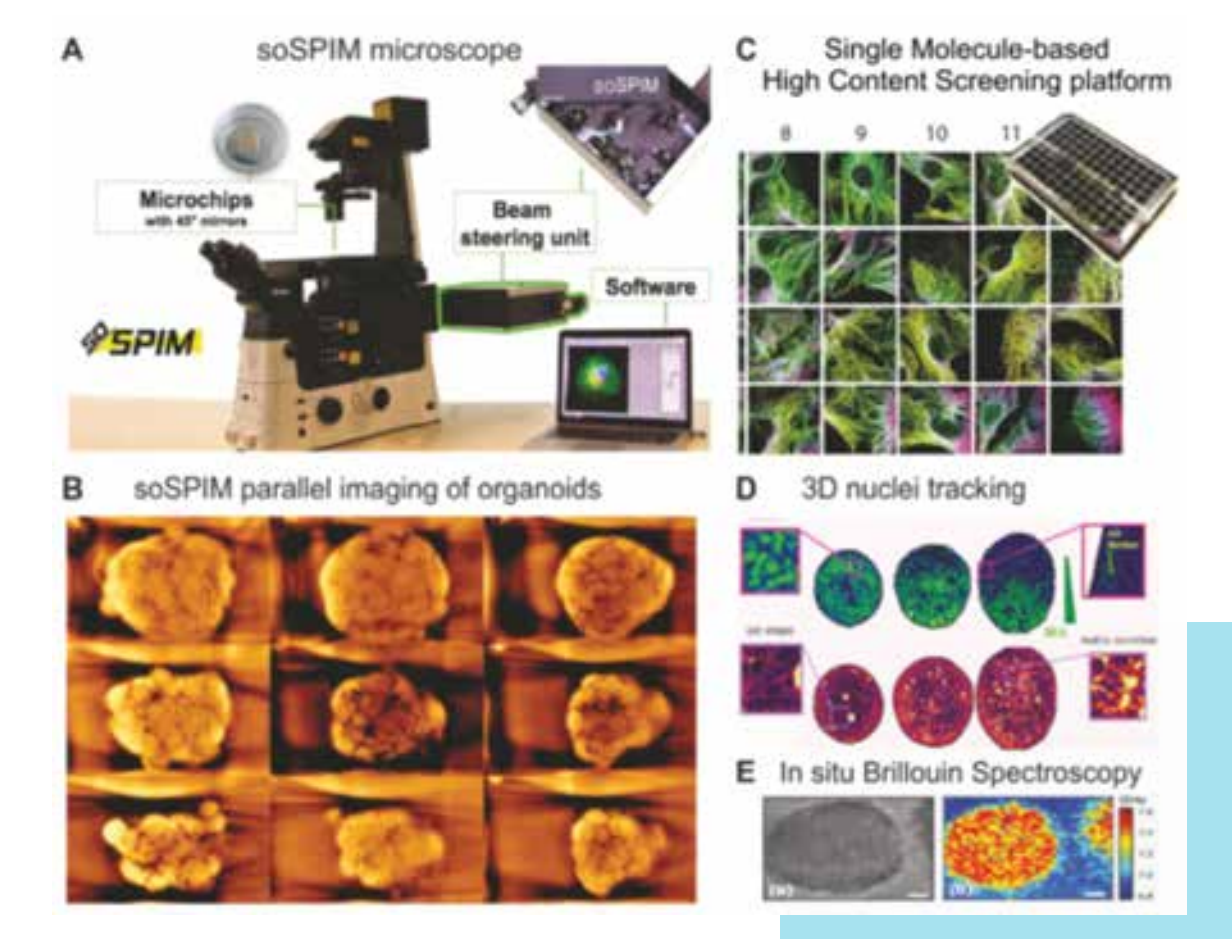
## INTERSECTION ON ENGINEERING AND HEALTH

### CALIPSO

Deep learning assisted approach streamlining the growth, 3D live imaging and quantification of organoid morphology with high content screening standards.

Started in october 2020 - 3 years.

Host institution CNRS@CREATE, in collaboration with NUS and NTU.

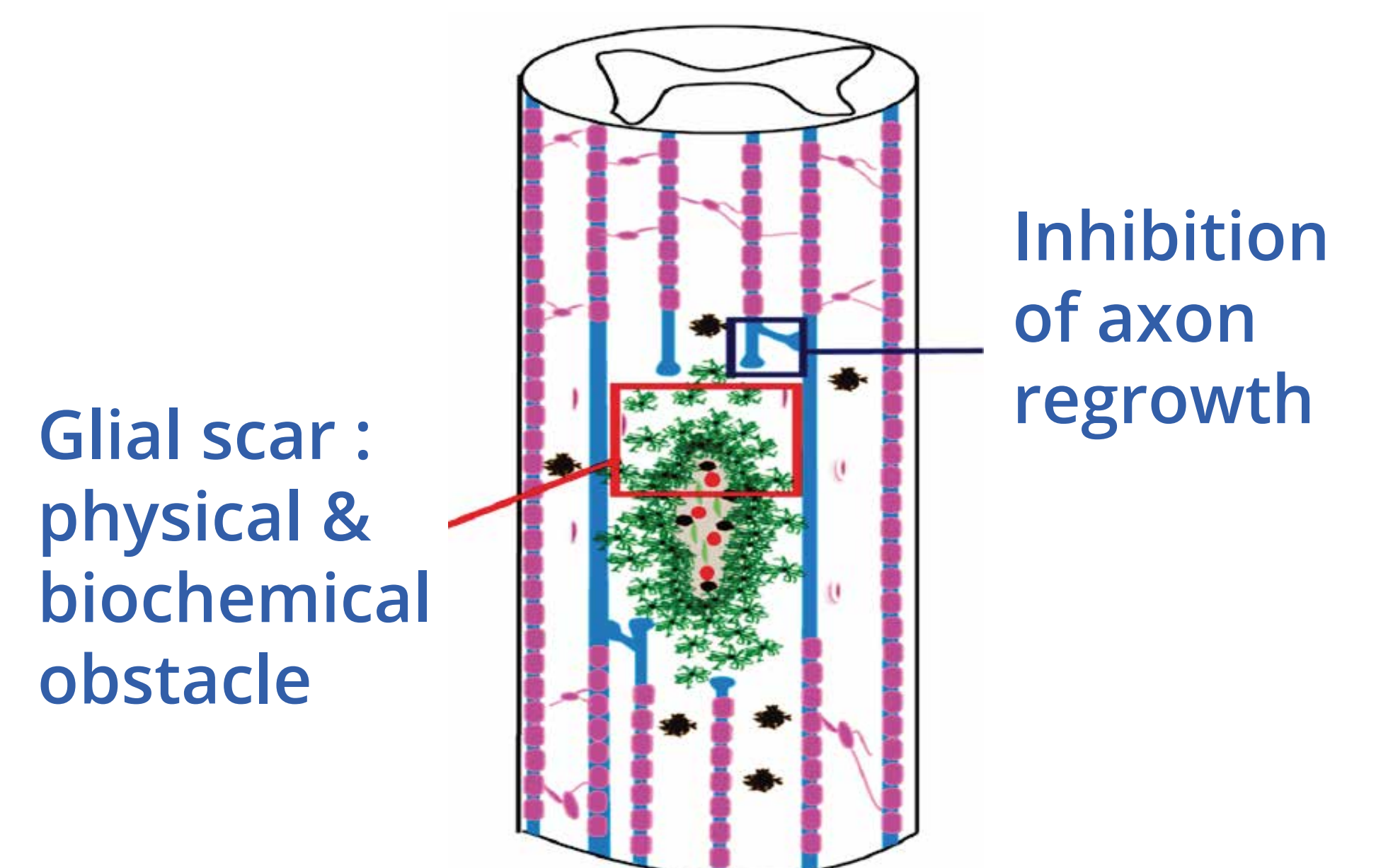


### ScaNCells

Engineering Scaffold-Mediated Neural Cell Therapy for Spinal Cord Injury Treatment.

Started in october 2020 - 3 years.

Host institution NTU, in collaboration with CNRS@CREATE, UCBL, A\*STAR, NUS, SMART.



## SCIENCE OF SUSTAINABLE CITIES

### SPACE

Shaping Public Adaptive Capacity for Environmental infectious diseases.

Starting in April 2022 - 3 years.

Host institution CNRS@CREATE, in collaboration with Nanterre University, Reims-Champagne University, NTU, NUS, SUTD, SUSS, SMU and NEA.

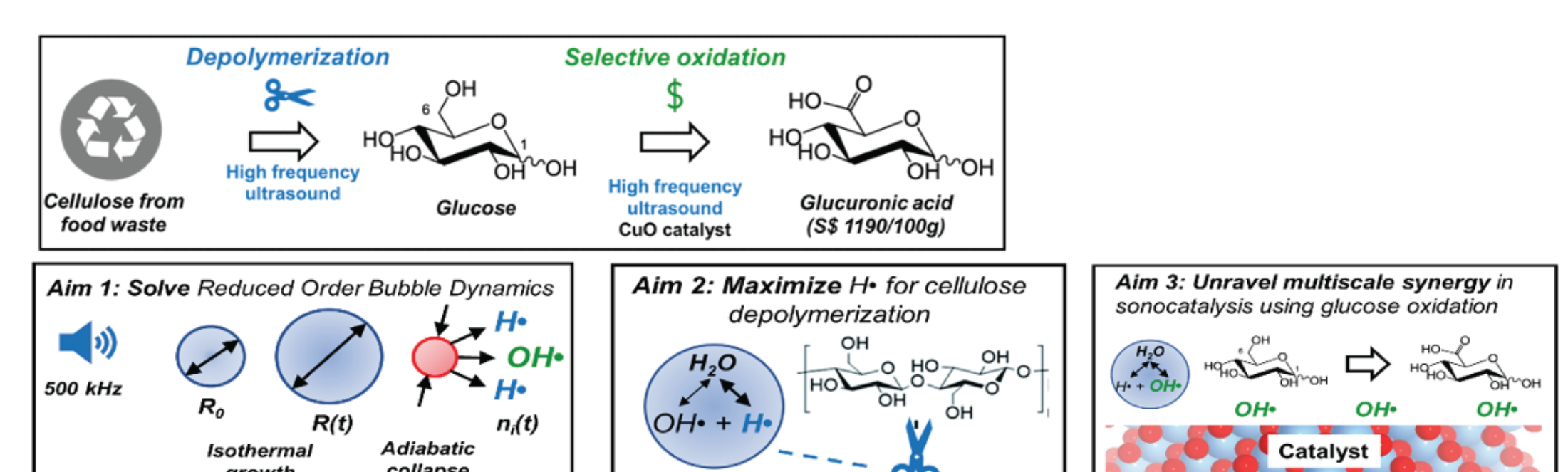
# INTRA CREATE SEED COLLABORATION GRANT

### BUBBLE

Orchestrating Chemistry in a Bubble to Upcycle Food Waste into Specialty Chemicals.

Started in october 2021 - 18 months.

Host institution CNRS@CREATE, in collaboration with Oxford, Poitiers University and NTU.



### Int2MEC

Int2MEC : Intelligent Multi-Energy Communities for enhanced distributed resources Integration in Singapore.

Starting in april 2022 - 18 months.

Host institution CNRS@CREATE, in collaboration with TUMCREATE.